

JR EAST PASS

Travel and discover!

Unlimited rides on all Shinkansen and other JR trains in the "unlimited-ride area".
Enjoy a memorable trip with the top value JR EAST PASS!

Tohoku area

Tohoku
area

Hayabusa (E5)



Tsubasa (E3)



Komachi (E6)



Eligibility

A foreign national with a
non-Japanese passport

Validity period

5 consecutive days

Price

Adult

(12 years of age or older)

20,000 yen

Child

(between 6 and 11 years of age)

10,000 yen

*An original, valid passport belonging to the person who will be using the rail pass must be presented at the time of purchase/exchange. (Copies of passports and other substitute documents will not be accepted.)

*Rail pass type cannot be changed following purchase.

*You may purchase multiple rail passes if their periods of validity do not overlap.

Tohoku area

https://www.jreast.co.jp/multi/en/pass/eastpass_t.html



JR EAST PASS (Tohoku area)

Blessed with magnificent mountains and beautiful lakes, and surrounded on three sides by the sea, the Tohoku region offers magnificent nature, traditional Japanese culture and delicious food. Tohoku is where you will find your favorite Japanese experience!



①Hiroaki Park



②Omagari



③Kitakami-Tenshochi



④Yamadera



⑤Zao



⑥Ouchijuku



⑦Nikko



⑧Tokyo



Boarding zone

This pass allows unlimited rides using reserved seats on the ordinary cars of the limited express trains (including Shinkansen), express trains, and local trains on JR East train lines (including BRT), all the Izu Kyuko lines, all the Tokyo Monorail lines, all the Aomori Railway lines, all the Iwate Galaxy Railway (IGR) lines, Sendai Airport Transit lines, and JR Bus Tohoku as well as JR Bus Kanto buses (excluding expressway bus routes and some other bus routes) within the unlimited-ride area. In addition, the pass also allows unlimited rides using reserved seats on the ordinary cars of the limited express trains such as the Tobu Direct Limited Express "Nikko", "Kinugawa" and "SPACIA Kinugawa" trains.

*1) The pass is not valid for limited express trains that arrive at and depart from the Tobu line stations. *2) GALA Yuzawa Station is open only during winter and spring.

Passes will be available for purchase from
JR East Reserved Seat Ticket Vending Machines.

*Limited to Reserved Seat Ticket Vending Machines placed at the JR East stations that have the passport reader installed.
*Tickets can still be purchased and staff consulted at ticket counters.
*Look for Reserved Seat Ticket Vending Machines with the applicable logos shown to the right.



Passport reader



Logo (example)

Find out more at:
https://www.jreast.co.jp/e/downloads/pdf/passport_operation_e.pdf



It's easy to reserve a seat using a
Reserved Seat Ticket Vending Machine!

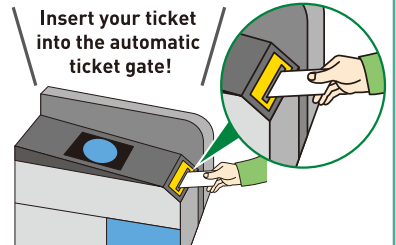


Images are for illustrative purposes only.

Reserved seats on shinkansen, limited express trains, etc. can be reserved using Reserved Seat Ticket Vending Machines at JR EAST stations.

How to Use the
Automatic Ticket Gates

Insert your ticket
into the automatic
ticket gate!



How to
Purchase
a JR EAST
Pass?

1 On the website

You can purchase passes via the
JR-EAST Train Reservation website.
<https://www.eki-net.com/en/jreast-train-reservation/Top/Index>

*Applies to purchases made beginning June 27, 2021



2 In Japan

You can purchase
the pass at a sales
location.

<http://www.jreast.co.jp/e/ticketwindow/>



3 At an overseas travel agency

You can purchase an Exchange Order
before coming to Japan. After arrival in
Japan, please exchange it for the pass.



EAST JAPAN RAILWAY COMPANY

<https://www.jreast.co.jp/e/>



JR East
InfoLine

Useful information, such as train schedules, the shortest routes to your destination and the location of JR Ticket Offices at each station, is available in English, Korean and Chinese.

TEL. 050-2016-1603

Office Hours 10:00 - 18:00 (except during the year-end/new year holidays)

*The phone number listed to the left is not a booking line.

This information is current as of April 2021. [2021/04]